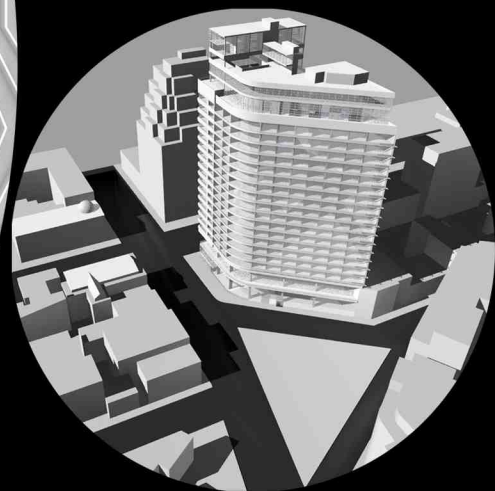
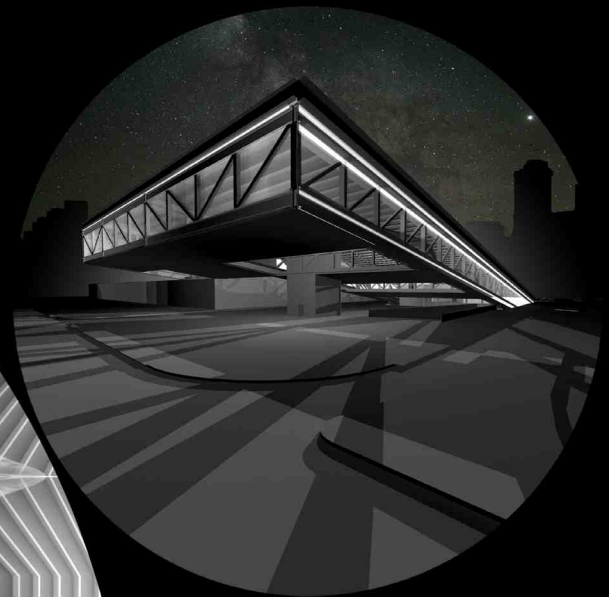


# Portfolio



Joshua M. Abraham  
Bachelor of Architecture  
Cornell University





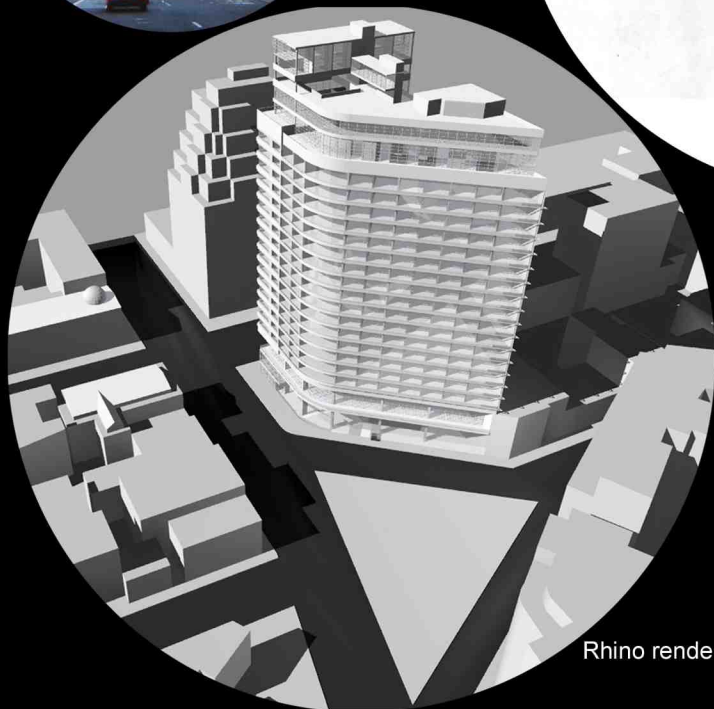
Street level



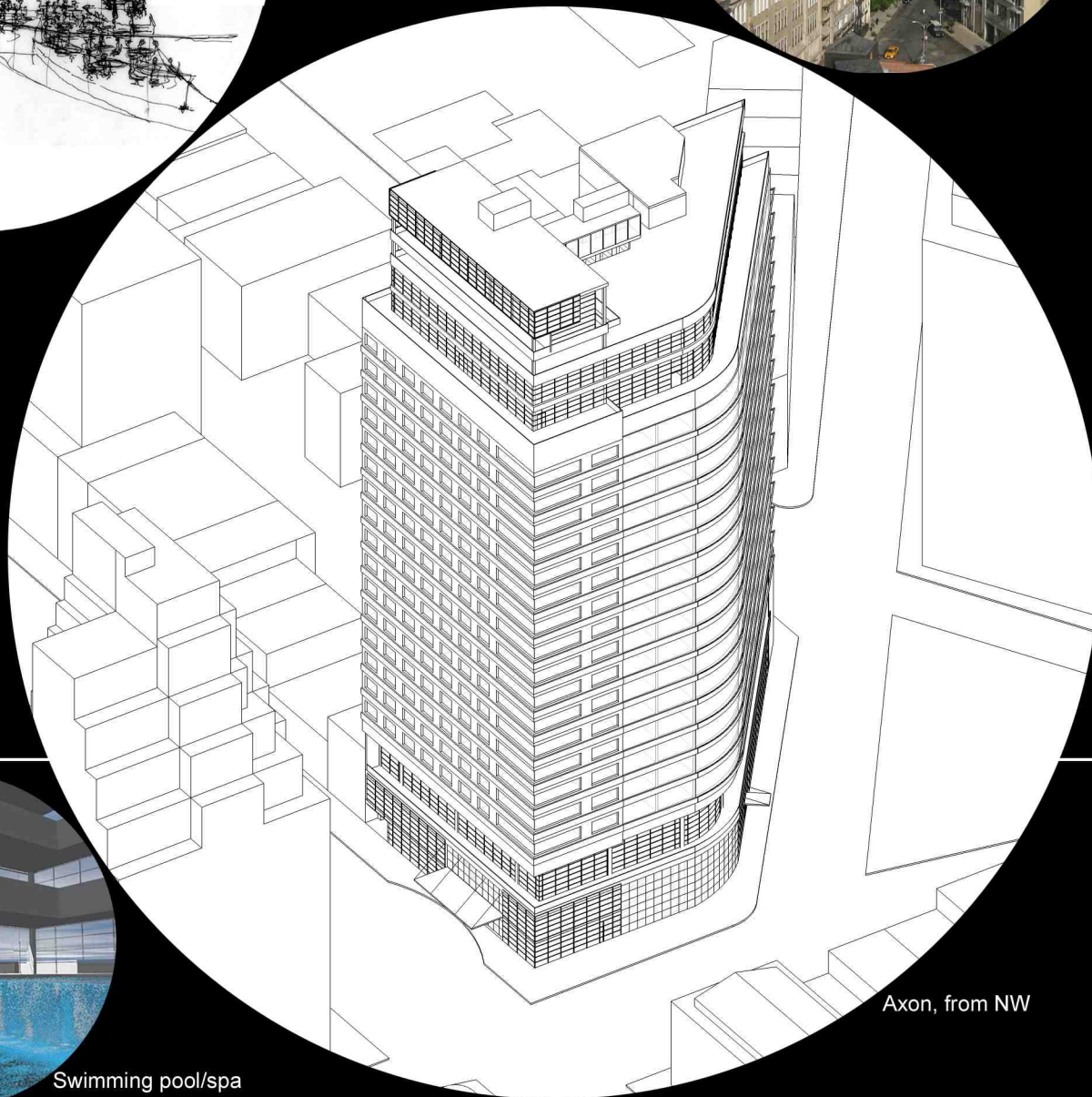
Jazz club sketch



Exterior view in context



Rhino rendering

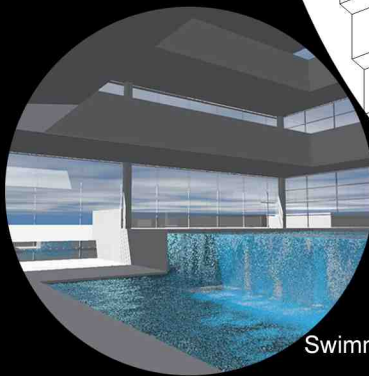


Axon, from NW

## Jackson Square Hotel

Greenwich Village, NYC

This third-year project for a boutique hotel is situated at Jackson Square, a major junction and the collision point of two street grid patterns. With frontage along three major streets - 14th Street, 8th Avenue, and Greenwich Avenue - the lower levels address the street, with shops, galleries, and a restaurant/jazz club. The guest rooms are distributed around a central atrium, and upper levels include a spa/health club, restaurant, and conference rooms.



Swimming pool/spa

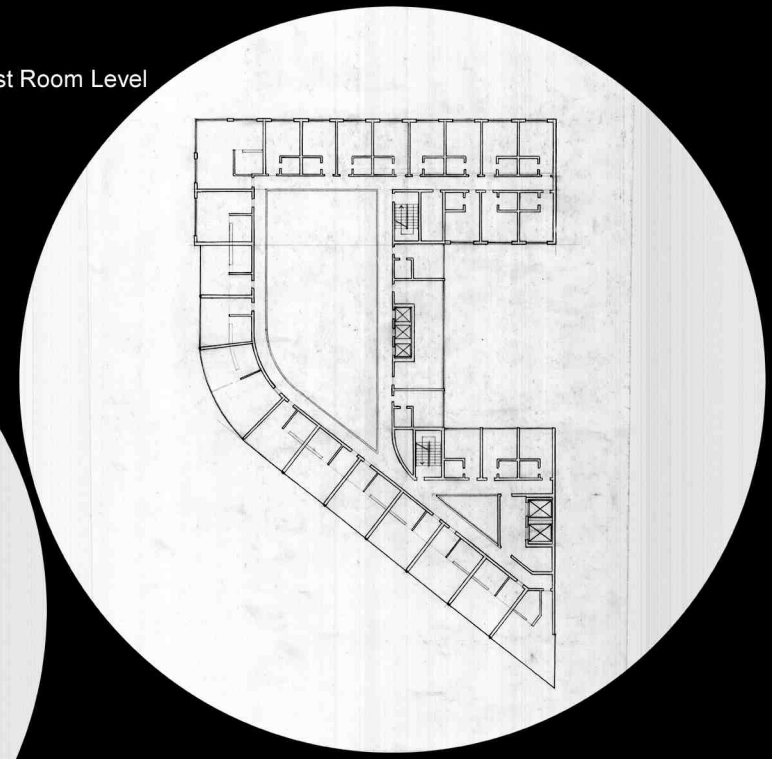


Site analysis: converging streets at site

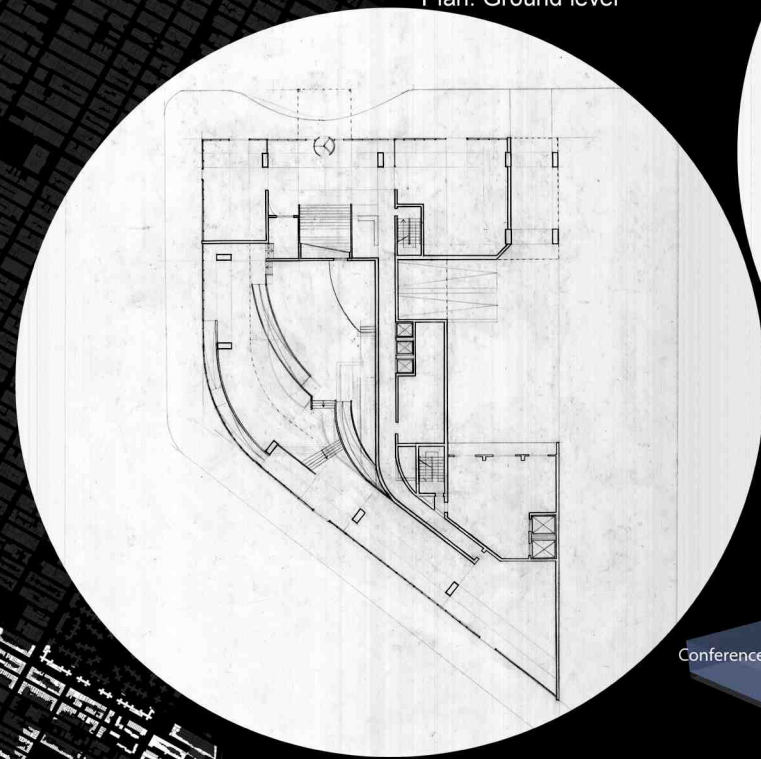
# Jackson Square Hotel

Greenwich Village, NYC

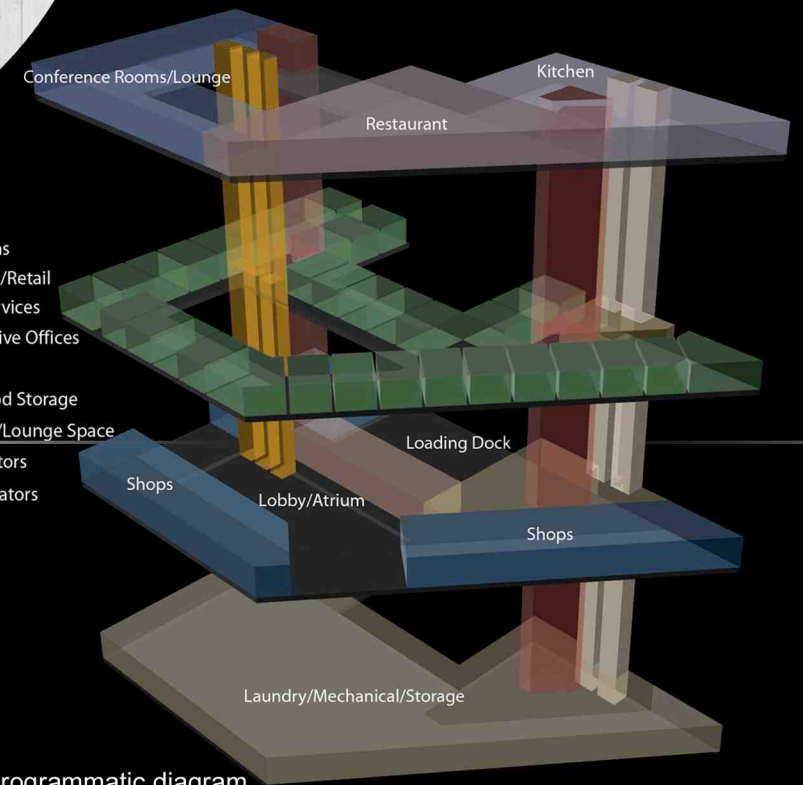
Plan: Typ. Guest Room Level



Plan: Ground level



- Guest Rooms
- Commercial/Retail
- Building Services
- Administrative Offices
- Restaurant
- Kitchen/Food Storage
- Conference/Lounge Space
- Guest Elevators
- Service Elevators
- Stairwells



Preliminary Programmatic diagram

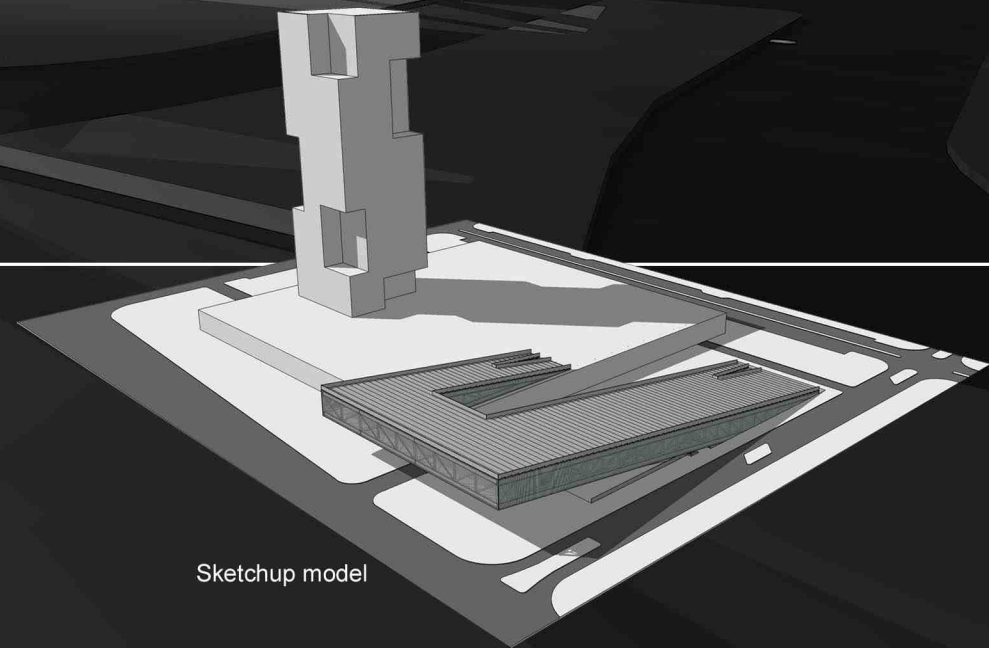
Concept sketch



## Community Music Center Valencia, Spain

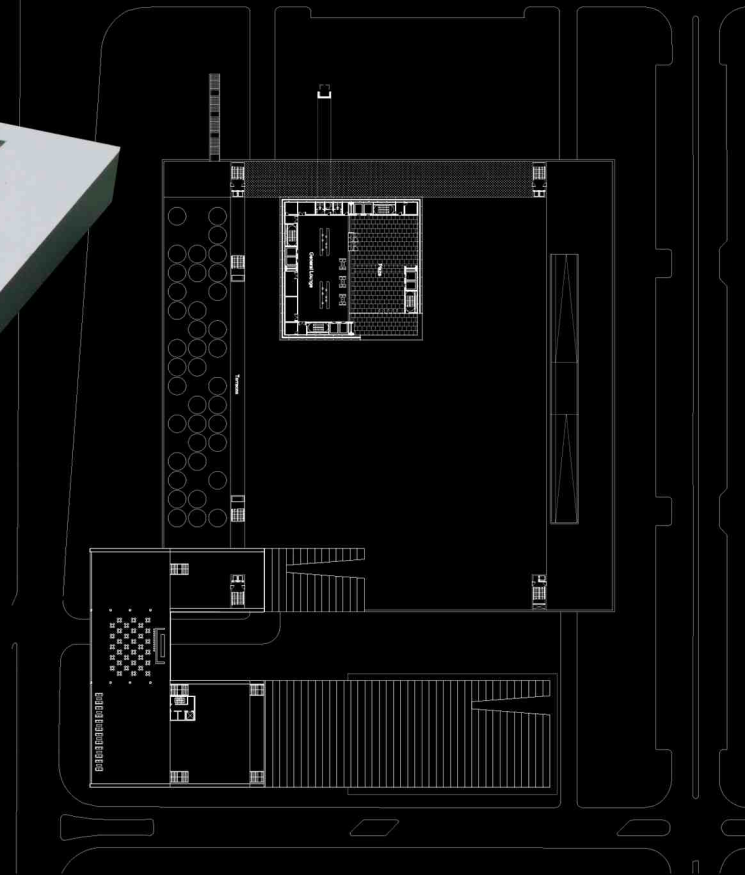
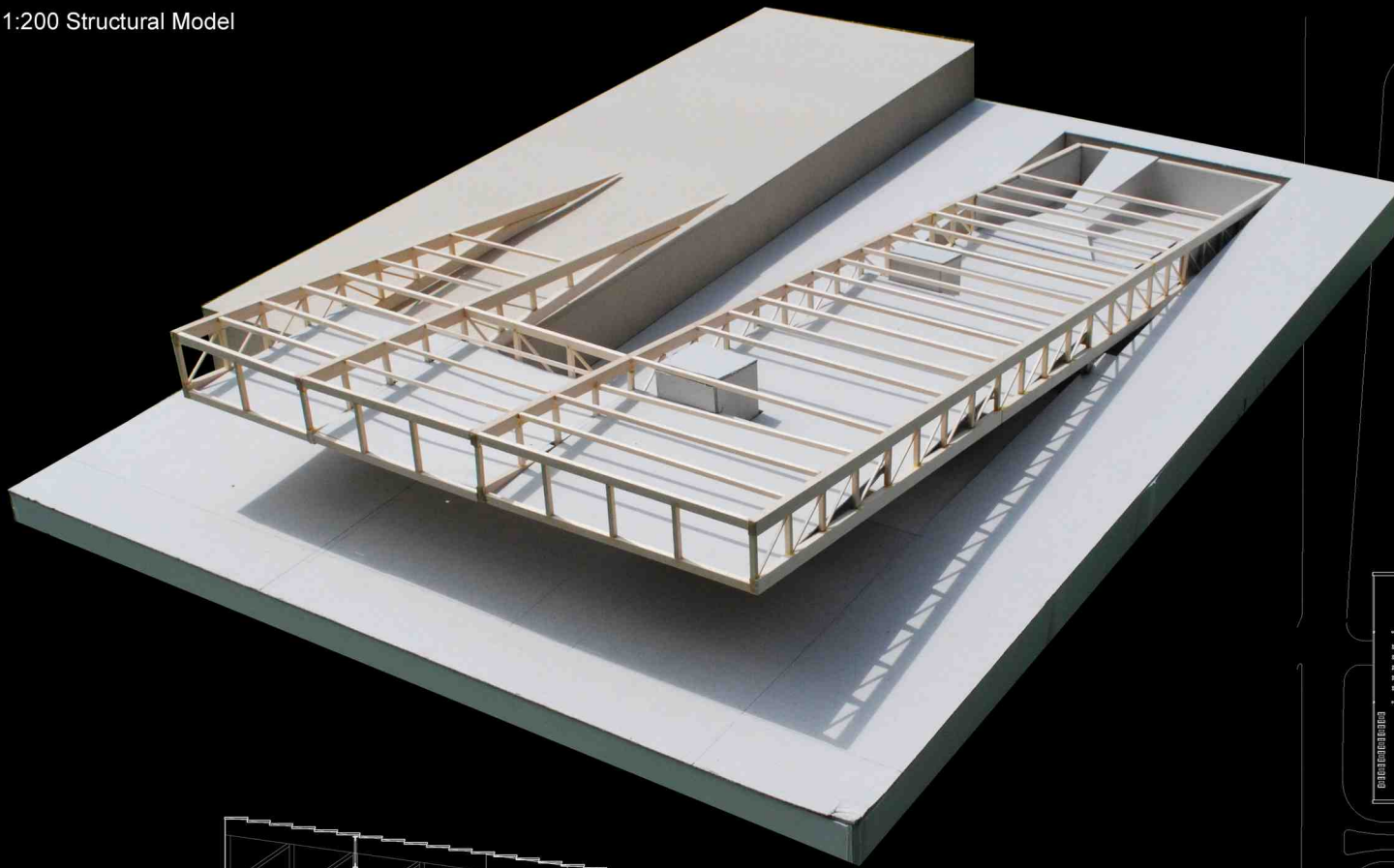
An addition to the planned Berklee School of Music outpost in Valencia (designed by studio professor Antón García-Abril), this project incorporates performance spaces and a community center. It takes the form of a giant lever - one end lifted up to shelter a large public plaza along a major thoroughfare, the other plunging into an excavated space containing performance spaces.

Sketchup model

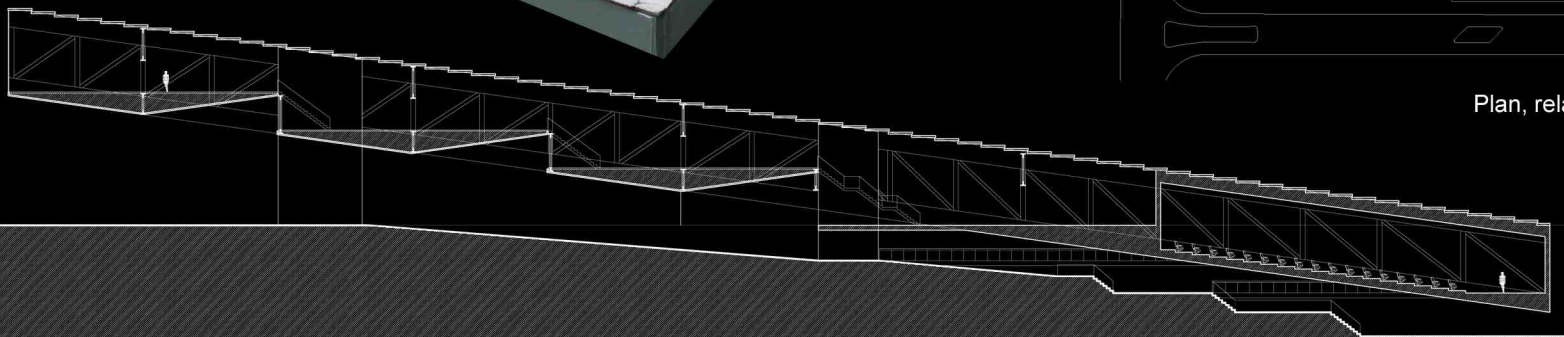




1:200 Structural Model



Plan, relationship to existing design



Longitudinal Section

# Community Music Center

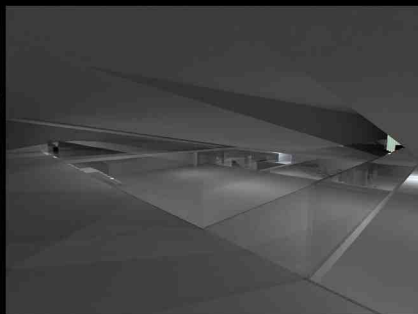
Valencia, Spain



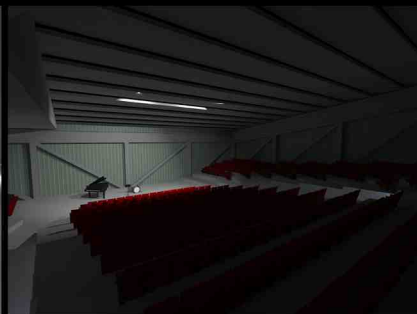
Student Lounge



Ground level lobby



Auditorium Lobby



Auditorium



Restaurant/Club



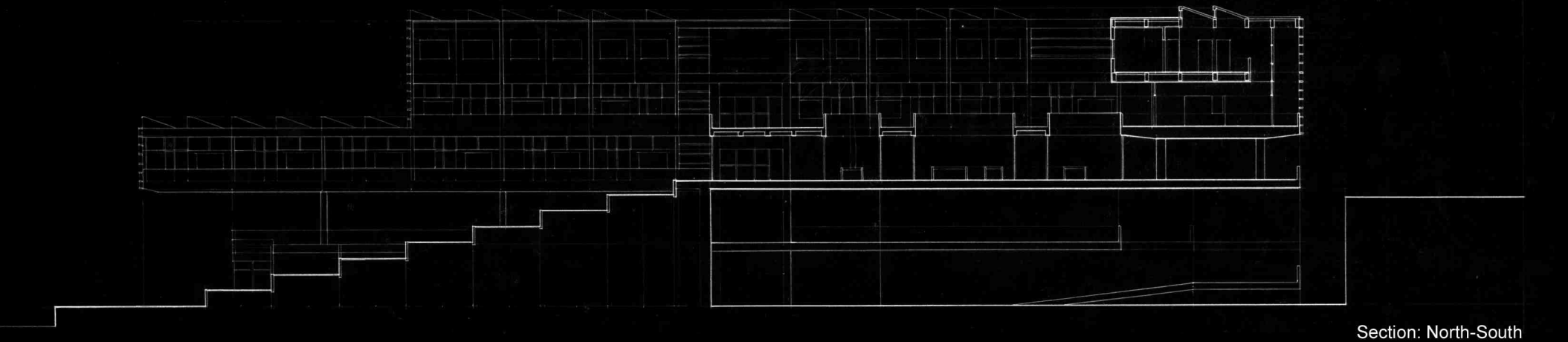


Housing Unit Study Model

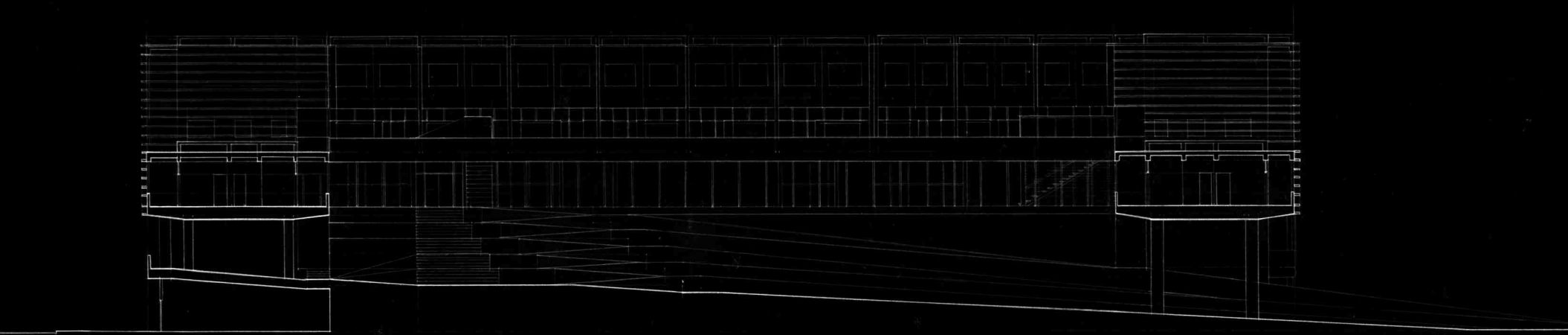
# Little River Housing

Little Haiti, Miami

This project responds to several needs of the surrounding neighborhood, incorporating spaces for commercial storefronts and offices, parking, multiple types of housing units, and related amenities. A new riverfront green space creates a public access point to the underutilized Little River.



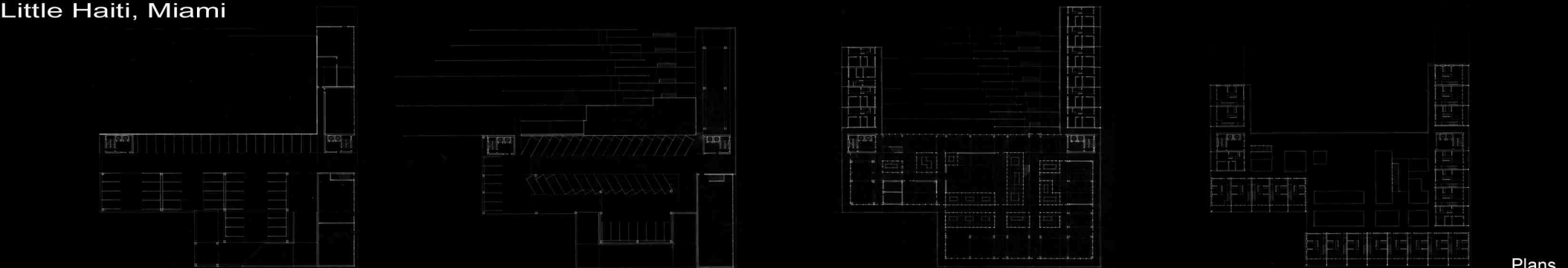
Section: North-South



Section: East-West

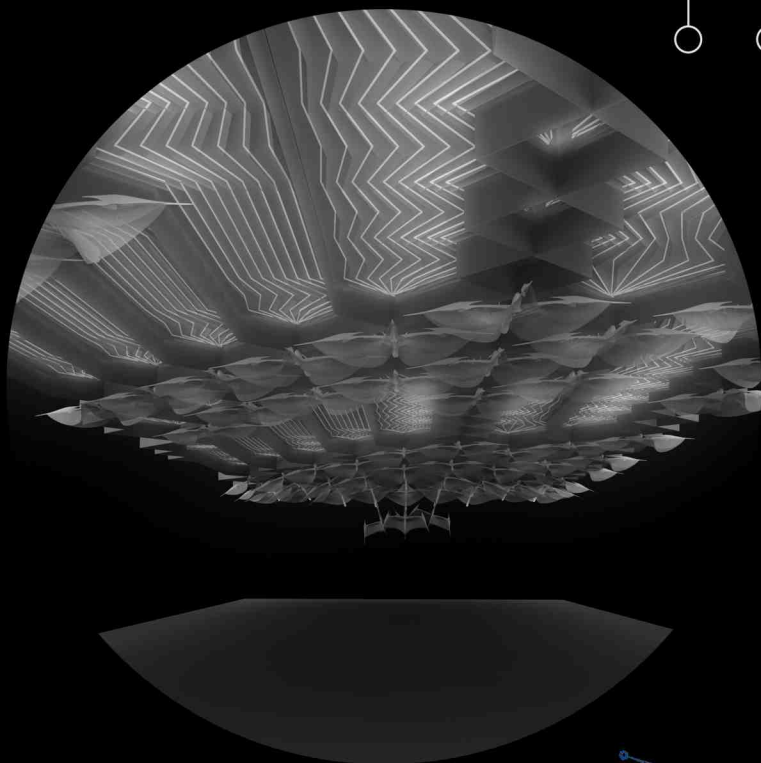
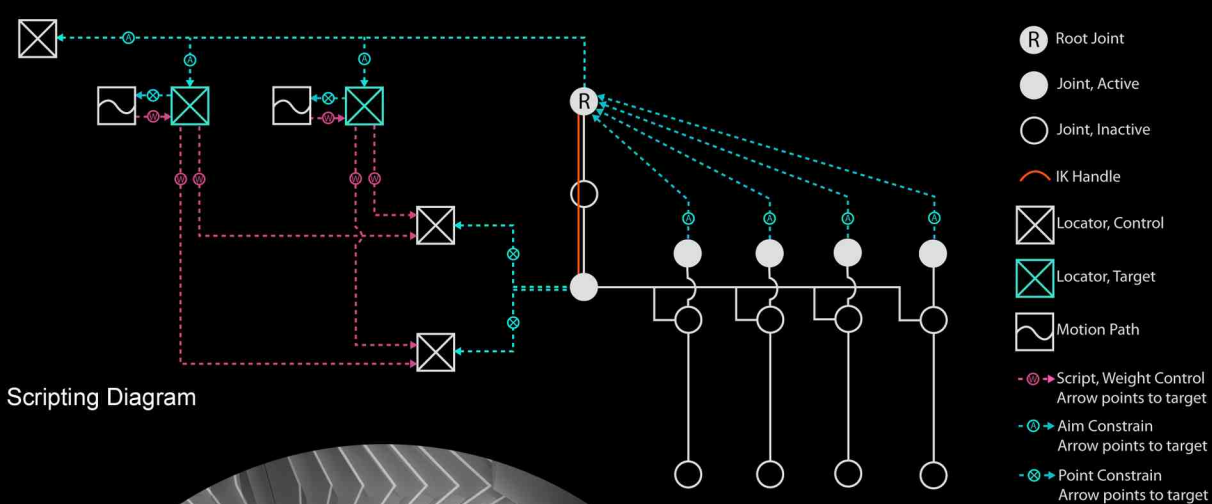
# Little River Housing

Little Haiti, Miami

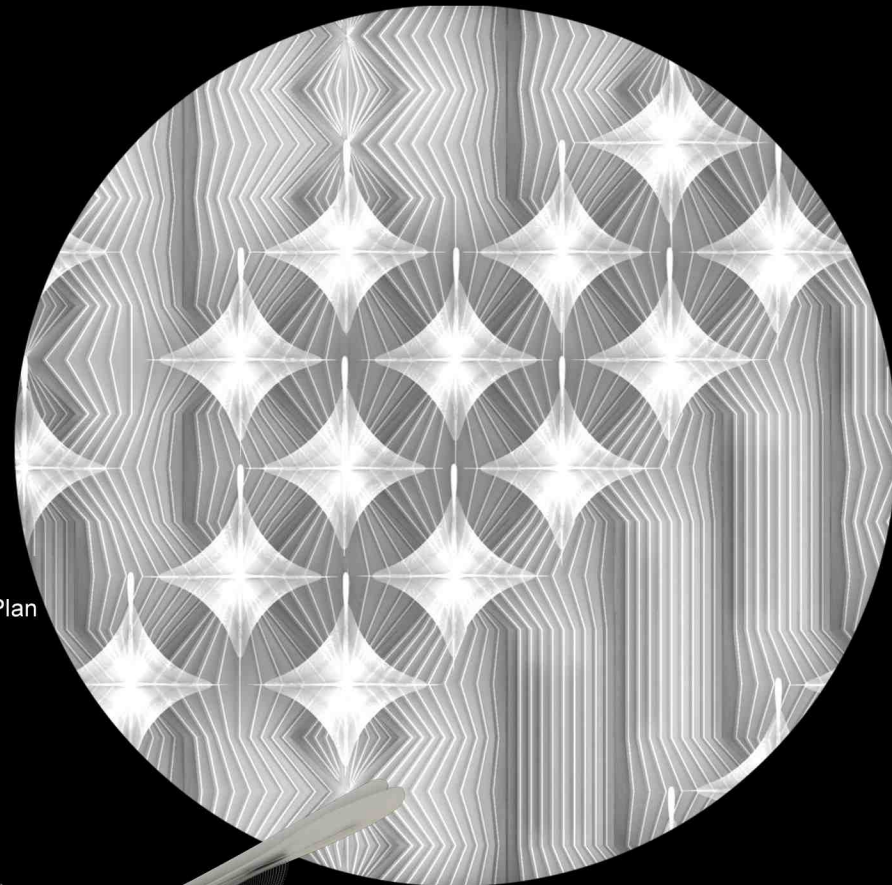


Plans



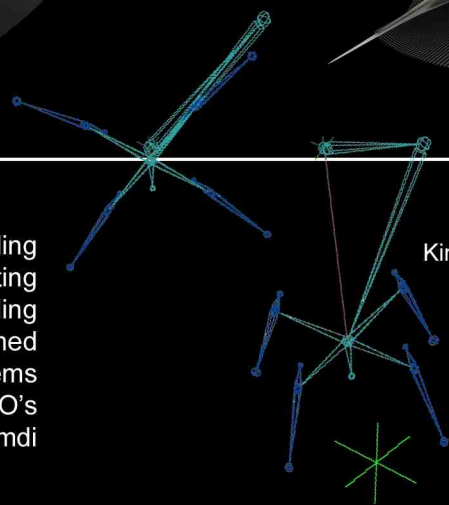


Reflected Ceiling Plan

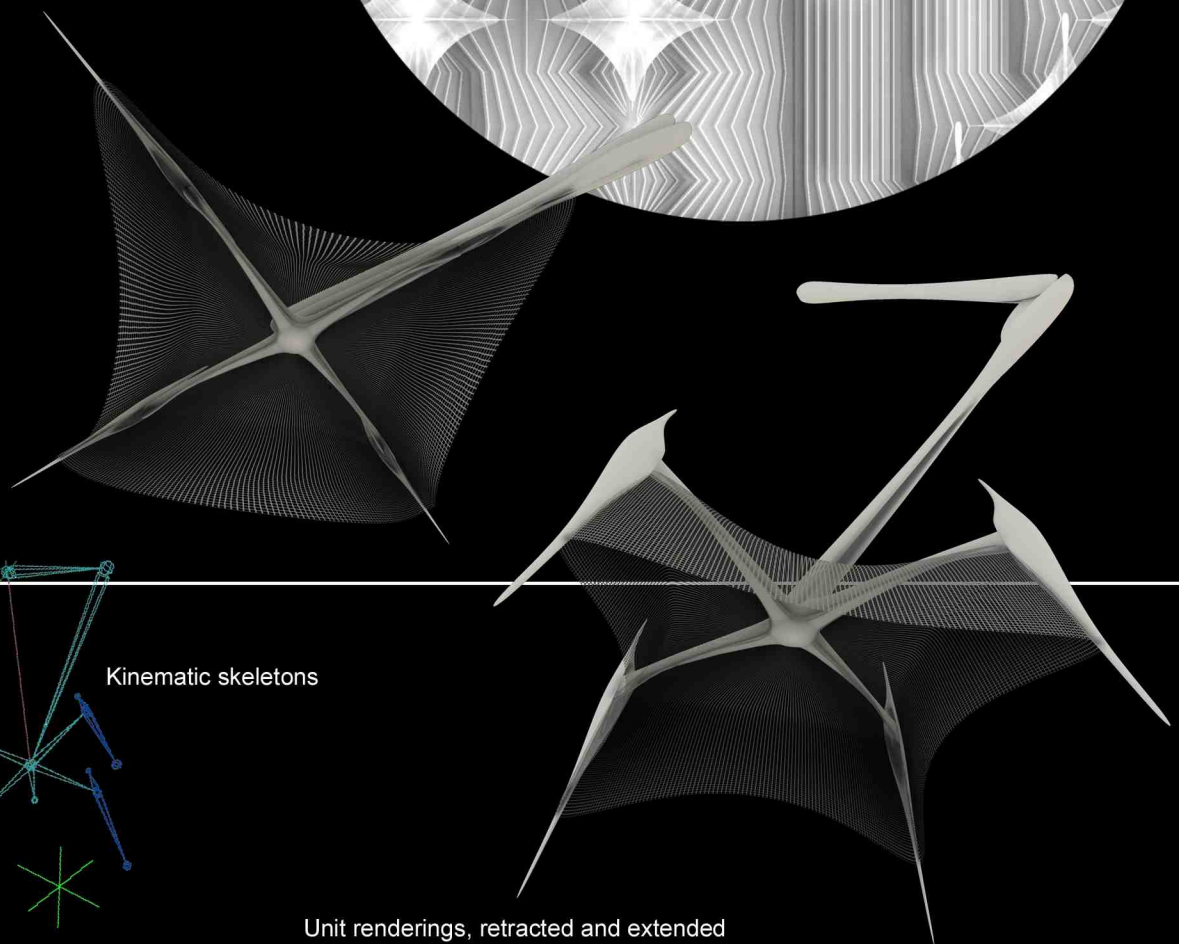


## Responsive Lighting

Designed with Autodesk Maya's kinematic modeling capability, these ceiling-mounted mechanical lighting units track "locators" within a space, extending downwards when a locator comes within a defined proximity range. Designed in the Responsive Systems studio at Cornell, this work was published in *SERVO's Networks and Environments* (Seoul, Damdi Architecture Publishing Co., 2008)

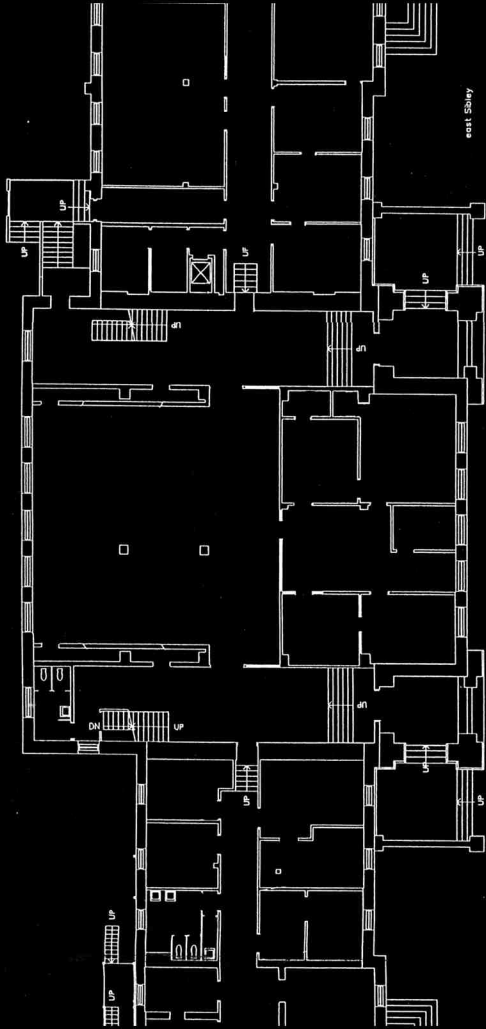


Kinematic skeletons

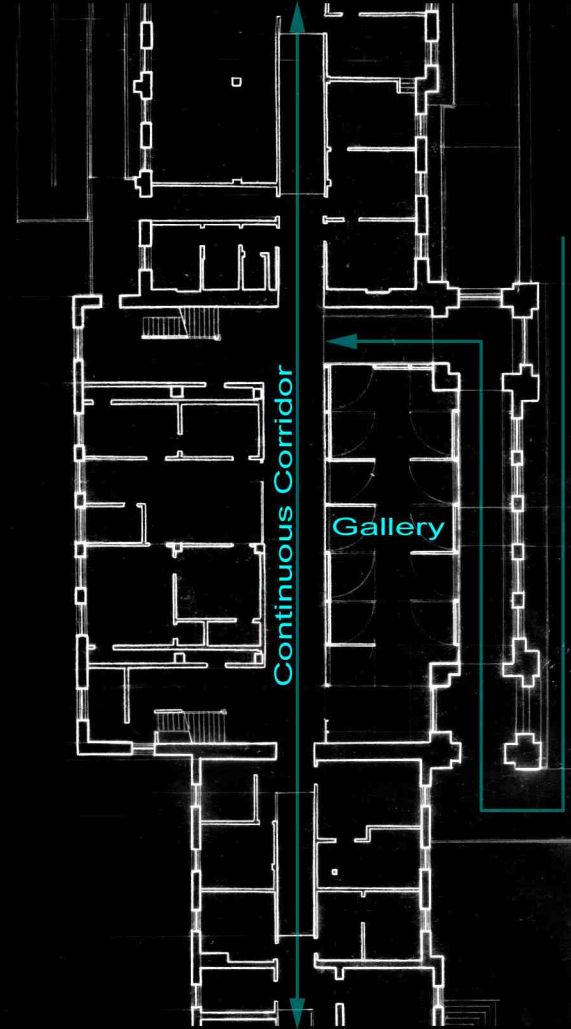


Unit renderings, retracted and extended

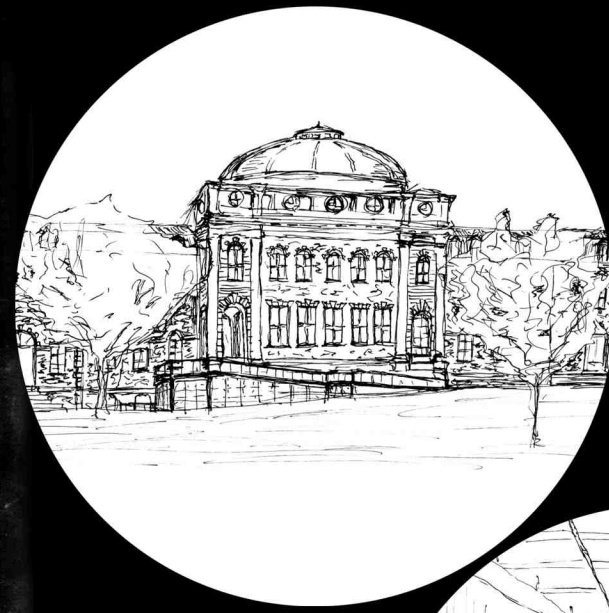




Plan, Existing



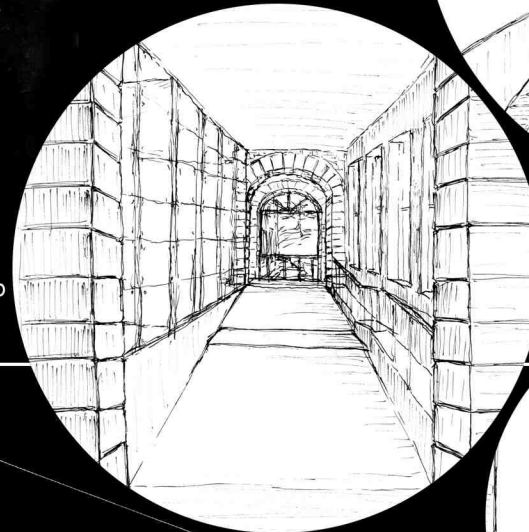
Plan, Renovation



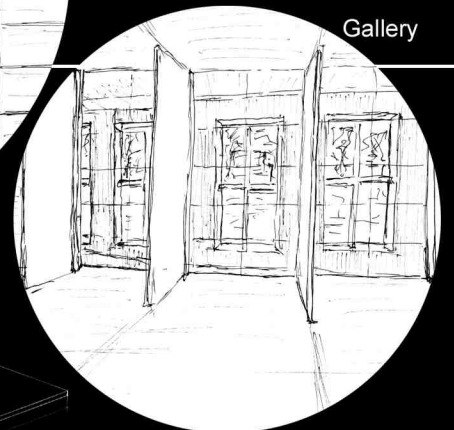
Exterior



Central corridor



Entrance ramp

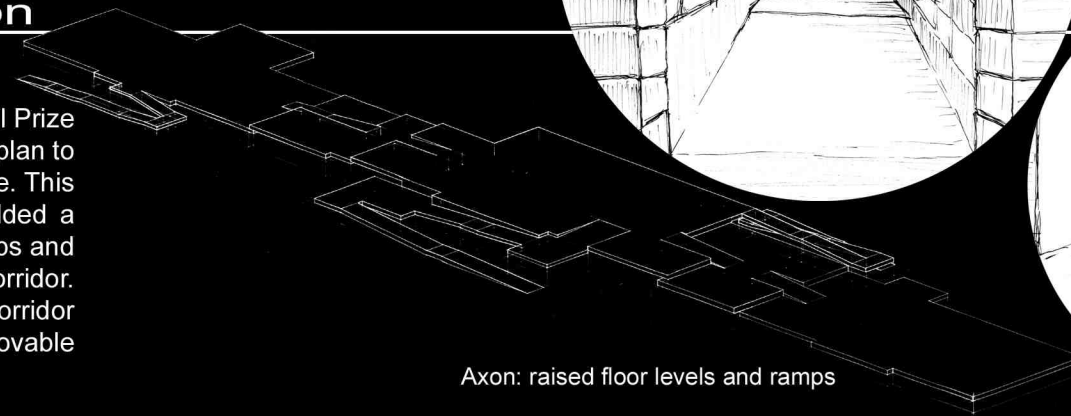


Gallery

## Accessibility Renovation

### Sibley Hall, Cornell University

In this charrette for the third-year Seipp Memorial Prize competition at Cornell, the task was to devise a plan to make the first floor of Sibley Hall ADA-accessible. This solution, which earned Honorable Mention, added a new central ramp entrance, as well as new ramps and raised floor levels along the central corridor. Additionally, it created an uninterrupted corridor through the building and a new gallery with movable wall panels for configurability.



Axon: raised floor levels and ramps

- light and warmth
- a sense of security
- shelter and enclosure
- energy-efficient
- compact and portable
- versatile

# BLANKET LIGHT



## Light Blanket

Bronze Award  
Koizumi International Lighting Design  
Competition, 2005

For the competition theme "Lighting for Disaster-Relief," our 3-person team attached LED lamps to a standard aluminum emergency blanket, combining two essential components of disaster relief: light and warmth. The design takes advantage of the reflective surface of the aluminum to create a gentle glow, and the energy-efficient LED's can provide up to 120 hours of constant illumination on a single set of batteries.





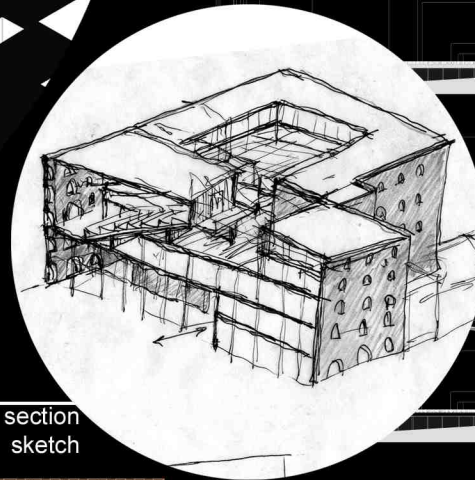
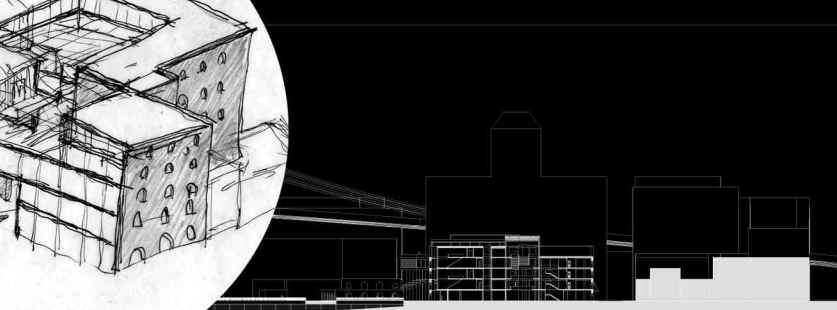
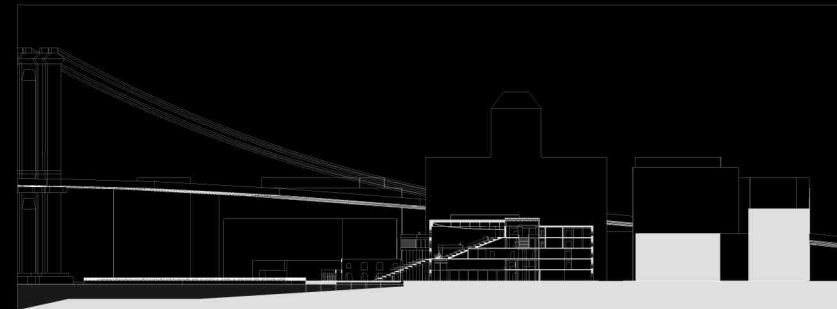
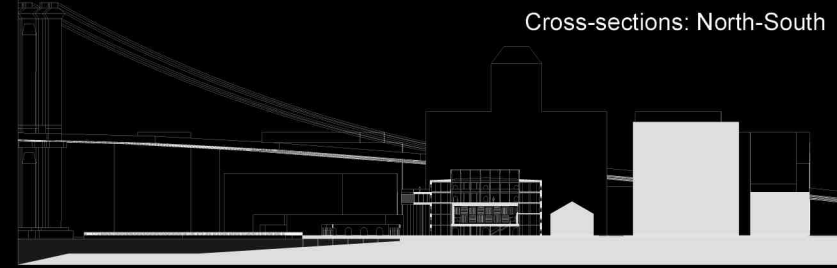
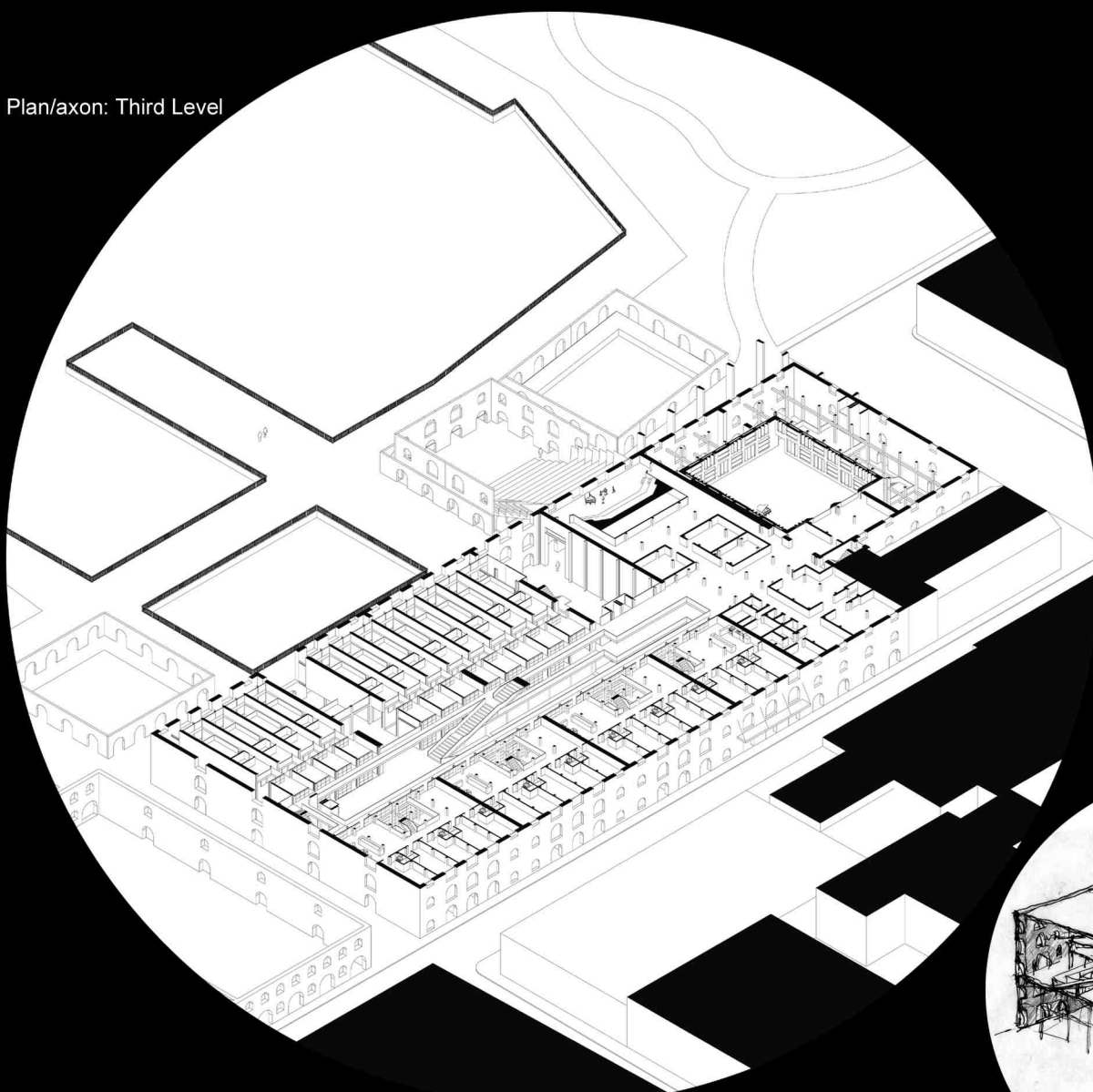
## Structural Model

"Bern Wave" train station, by smarch

This 3/16"=1' scale model of smarch's Bern Central Train Station was constructed for a Structural Systems course at Cornell. The platforms and elevator towers were cast in Rockite cement. The undulating wooden beams were created by laminating strips of basswood, then placing them in a custom-made pressure mold to bend them to the desired curvature as the glue set.



Plan/axon: Third Level



Performance Center section sketch

## Adaptive Reuse Artist Housing DUMBO, Brooklyn

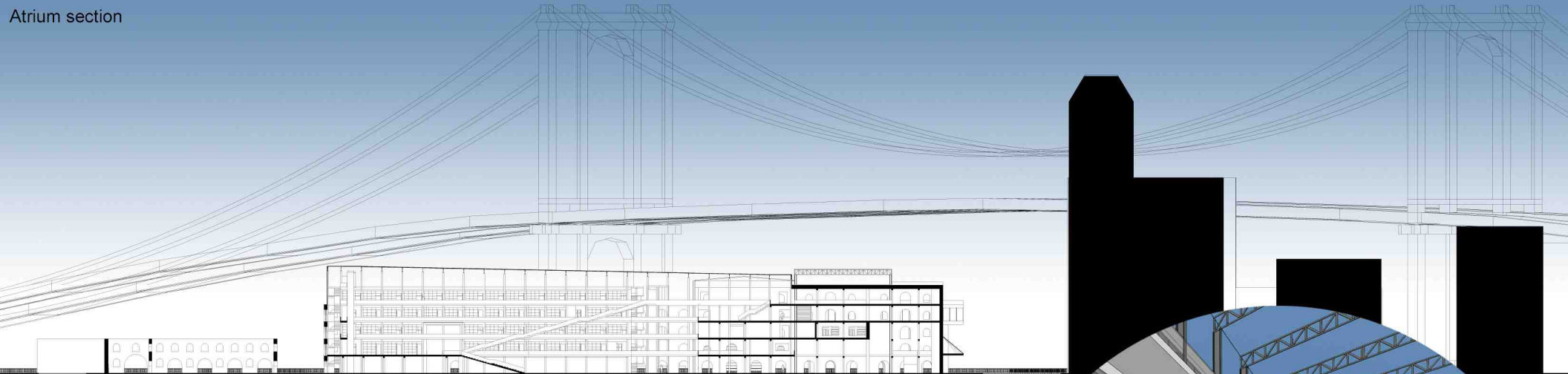
This project takes the vacant Empire Stores Warehouses, on the East River waterfront, and converts them into an artist community complex. The complex incorporates private housing and studio spaces, as well as a public arts and performance center containing multiple performance spaces, galleries, practice rooms, and workshops.



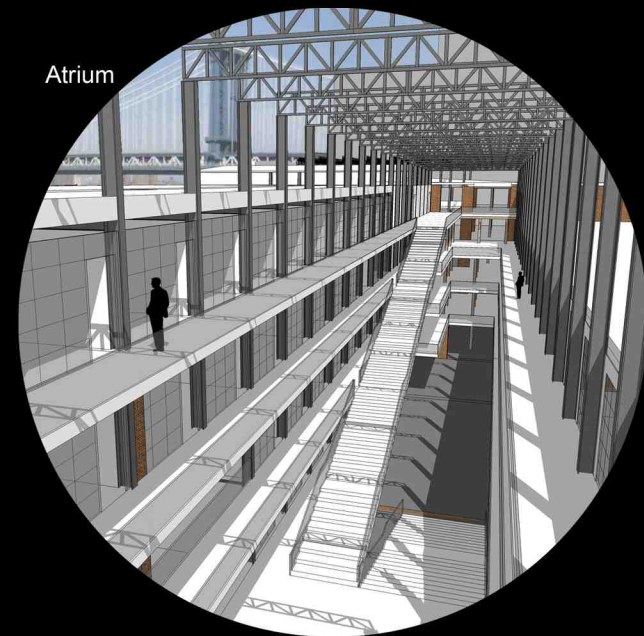
Program distribution



Atrium section



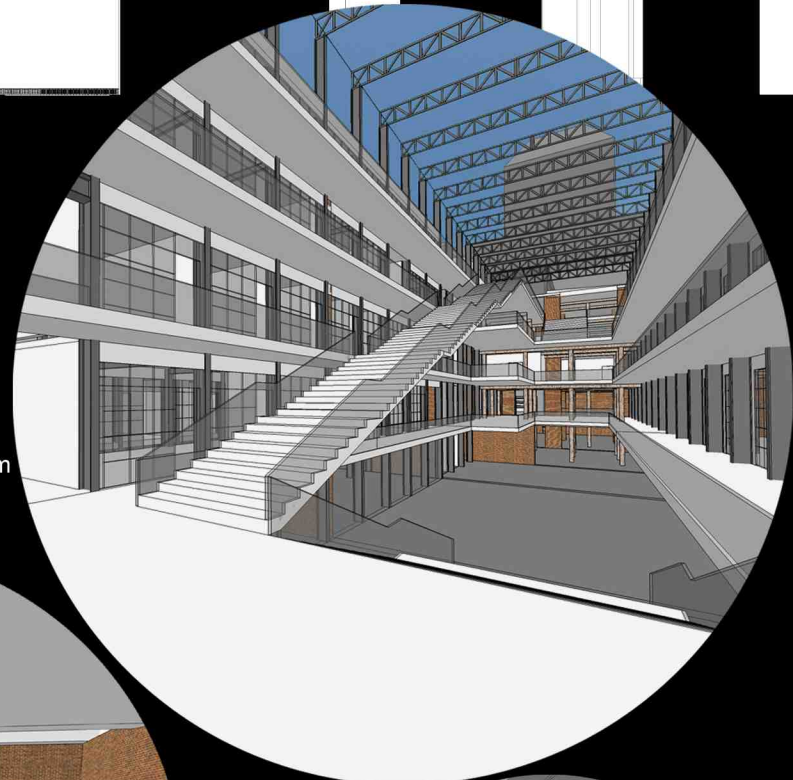
Atrium



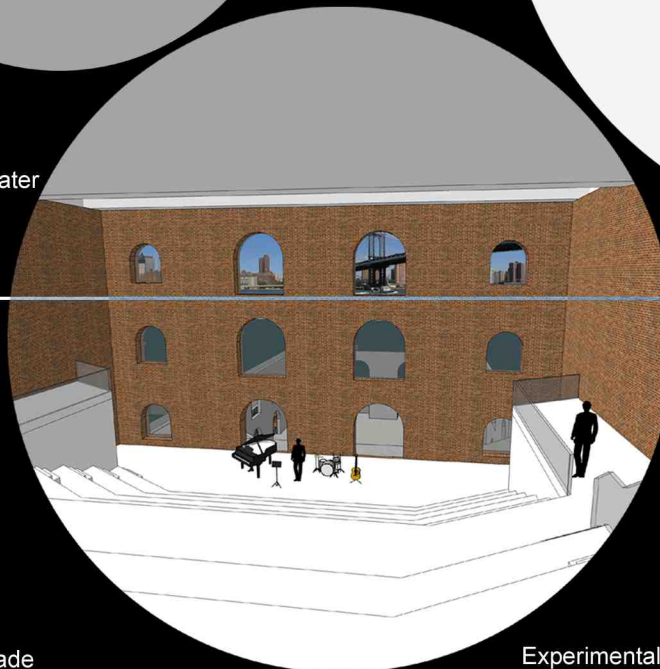
Gallery courtyard



Atrium



Theater



# Adaptive Reuse Artist Housing DUMBO, Brooklyn



Waterfront facade

Experimental theater/recording studio

